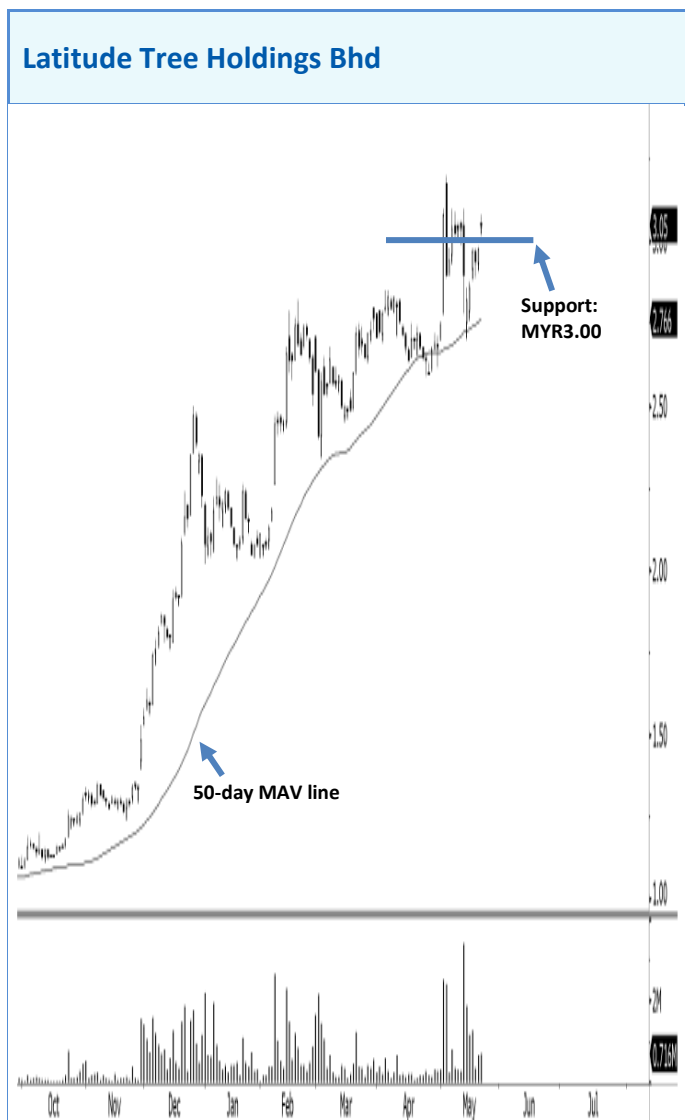


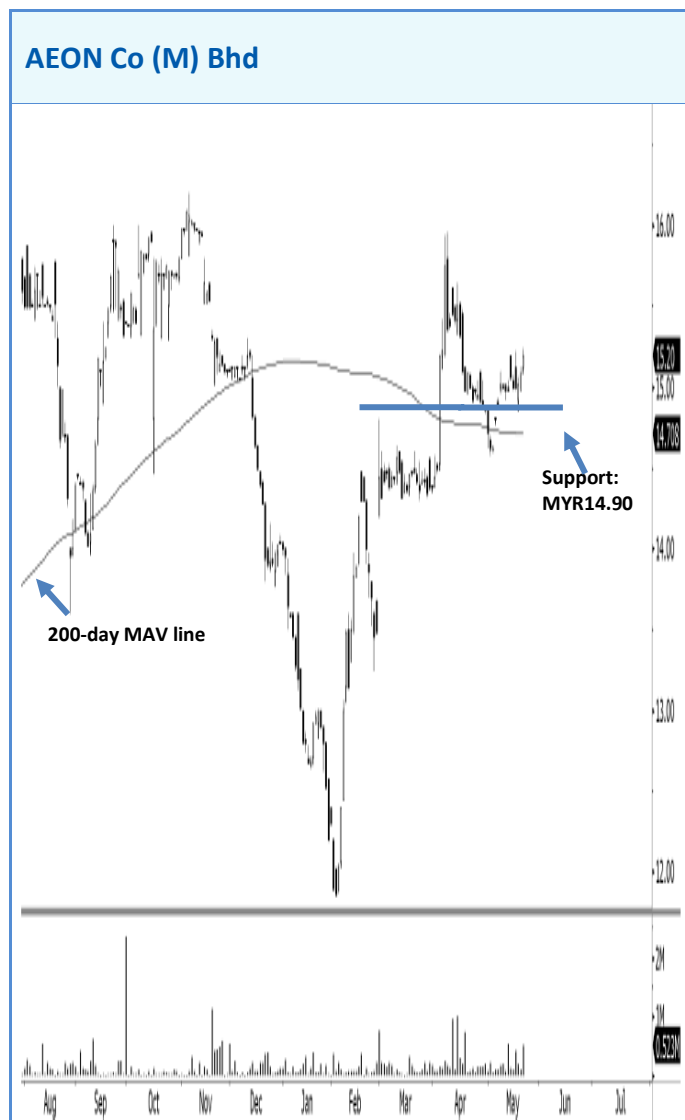
Mohammad Ashraf Abu Bakar, CMT
 Tel : +6(03)9207 7699
 Email : mohammad.ashraf@rhbgroup.com

Trading Stocks



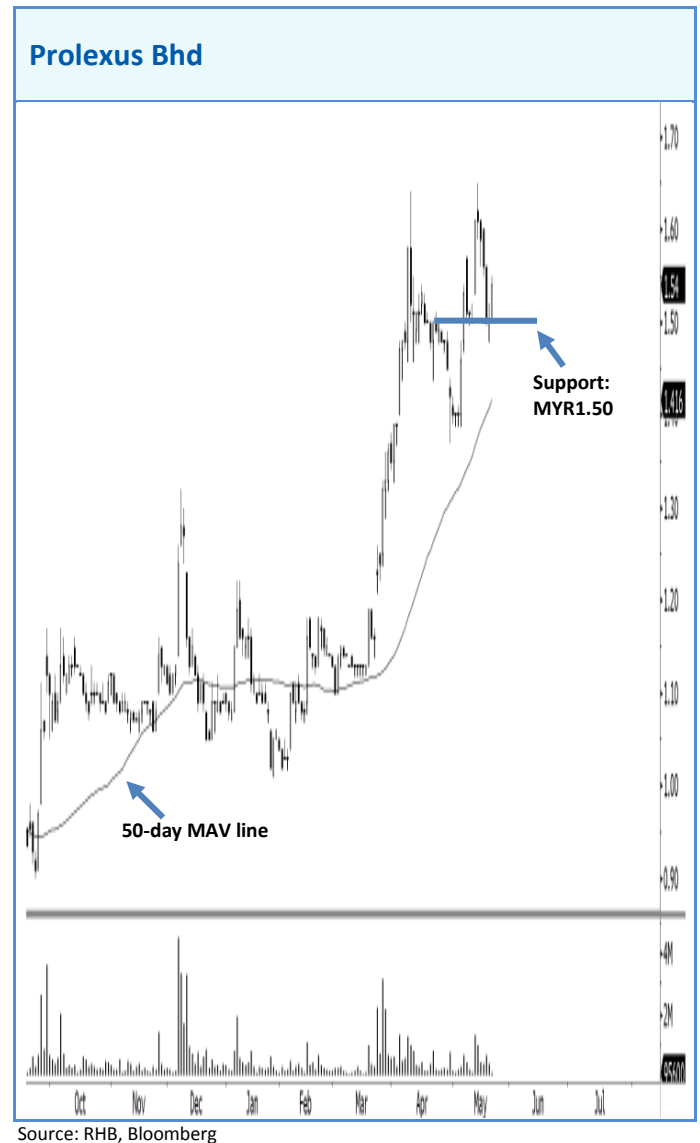
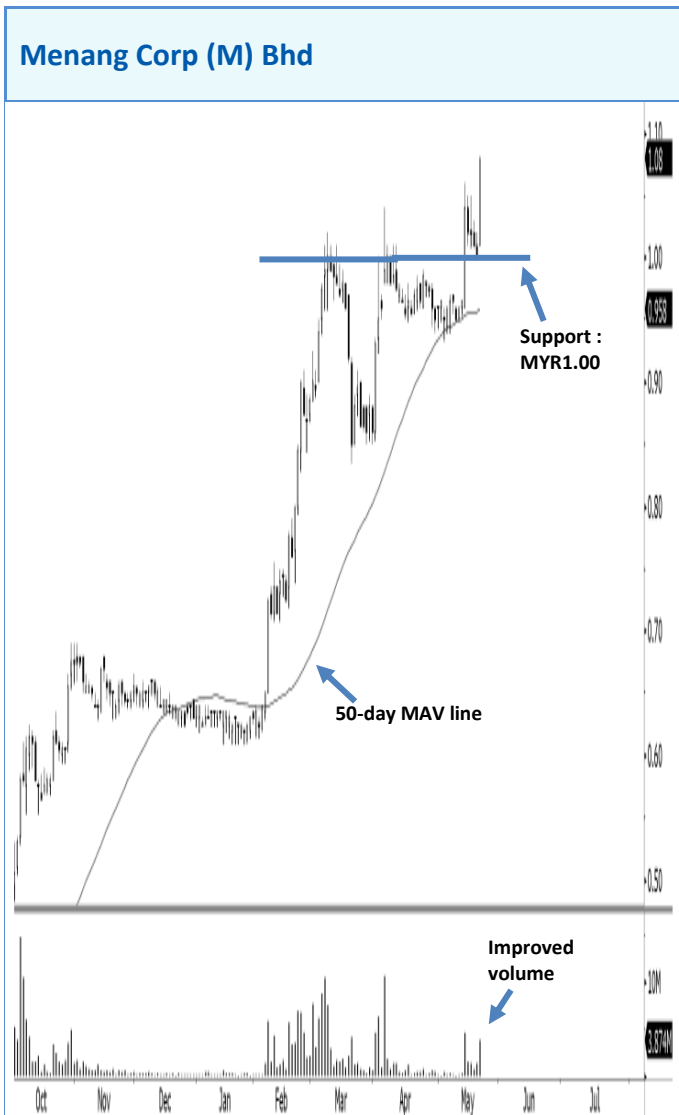
Source: RHB, Bloomberg

Latitude may rally after gapping higher yesterday. Traders may buy if the stock stays above MYR3.00 today, with a close below MYR2.90 as a stop-loss. Should the MYR3.15 resistance level be broken, the price target will be MYR3.30. However, a failure to stay above MYR3.00 will likely see the stock trading sideways, while further support is at MYR2.75.



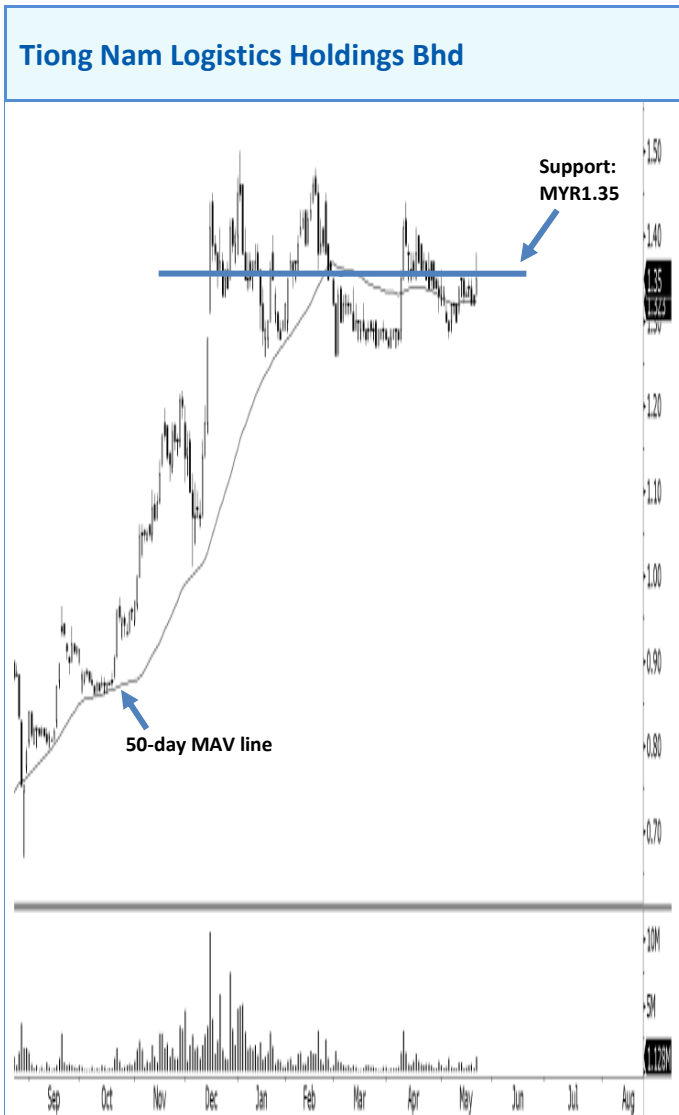
Source: RHB, Bloomberg

AEON may rebound after holding above the 200-day MAV line. If the stock closes above MYR15.20, traders may opt to buy – with a close below MYR14.90 as a stop-loss. Should the MYR15.90 resistance level be broken, the price target will be MYR16.30. However, a failure to stay above MYR15.20 will likely see the stock trading lower and further support is at MYR14.30.



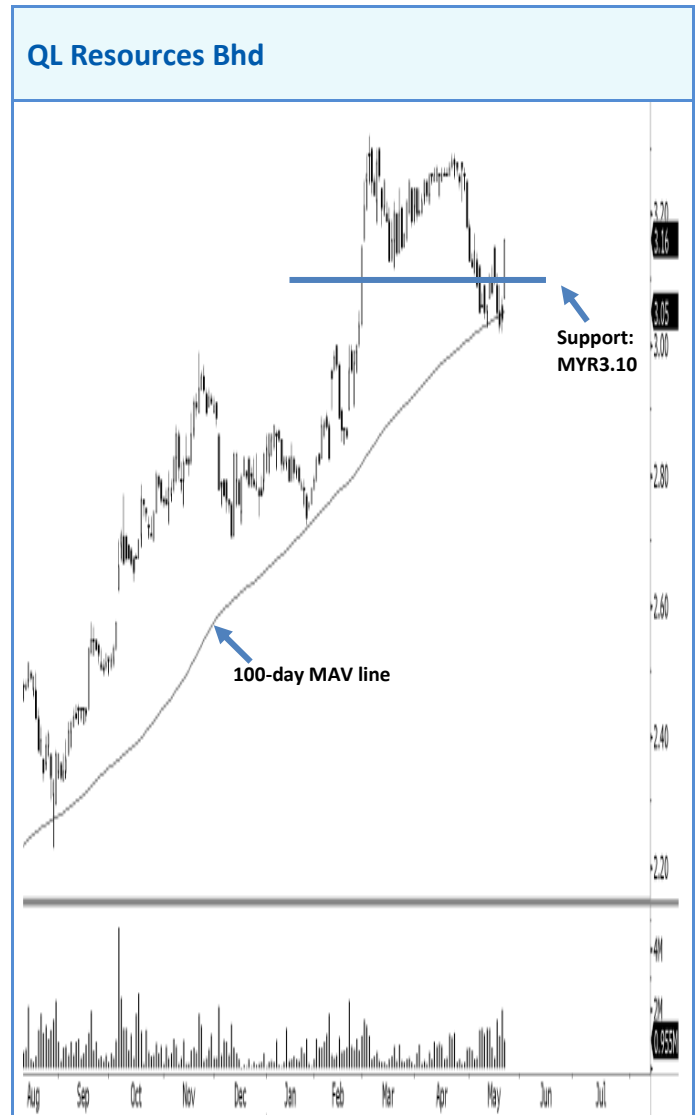
Menang may climb after closing the highest in more than a year. Traders may buy if the stock stays above MYR1.05 today, with a close below MYR1.00 as a stop-loss. The price target is MYR1.20 if the MYR1.10 resistance is broken. However, note that the stock could trend lower if it fails to stay above MYR1.05, and further support is at MYR0.95.

Prolexus may rally after the latest white candle. Traders may opt to purchase the stock if it stays above MYR1.50, with a close below MYR1.48 as a stop-loss. The price target is MYR1.80, if the MYR1.65 resistance is broken. The stock could trend lower if it fails to stay above MYR1.50, and further support is at MYR1.40.



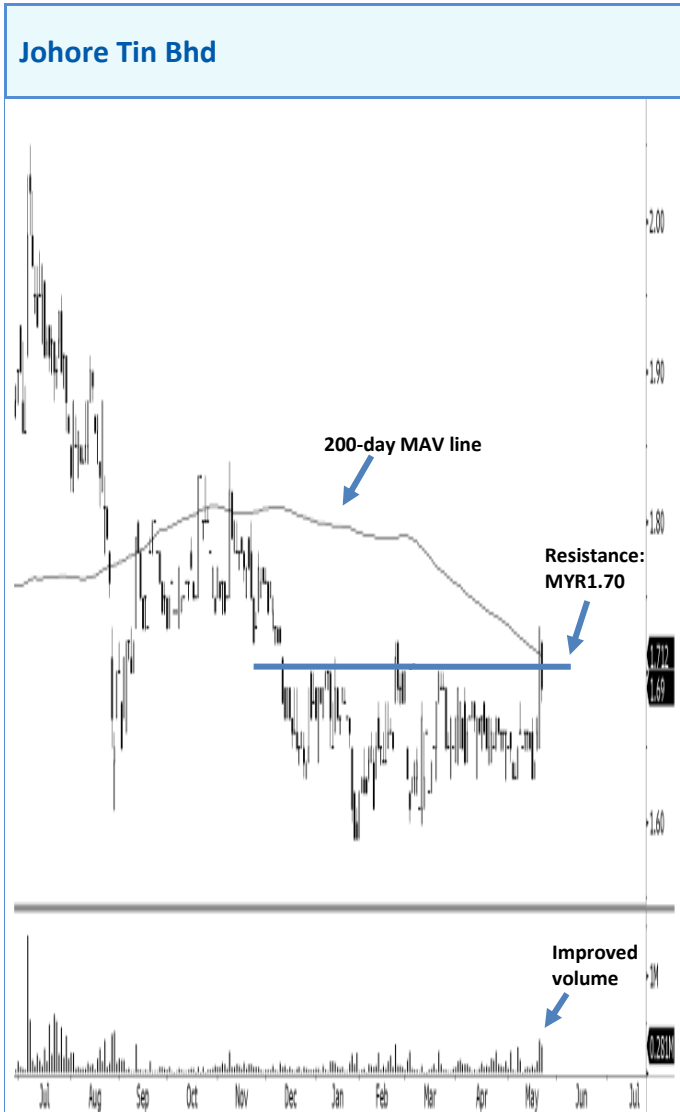
Source: RHB, Bloomberg

Tiong Nam may climb after holding above the 50-day MAV line. Traders may buy if the stock closes above MYR1.35, with a close below MYR1.30 as a stop-loss. The price target is MYR1.50 if the MYR1.40 resistance is broken. However, note that the stock could trend sideways if it fails to get above MYR1.35, while further support is at MYR1.25.



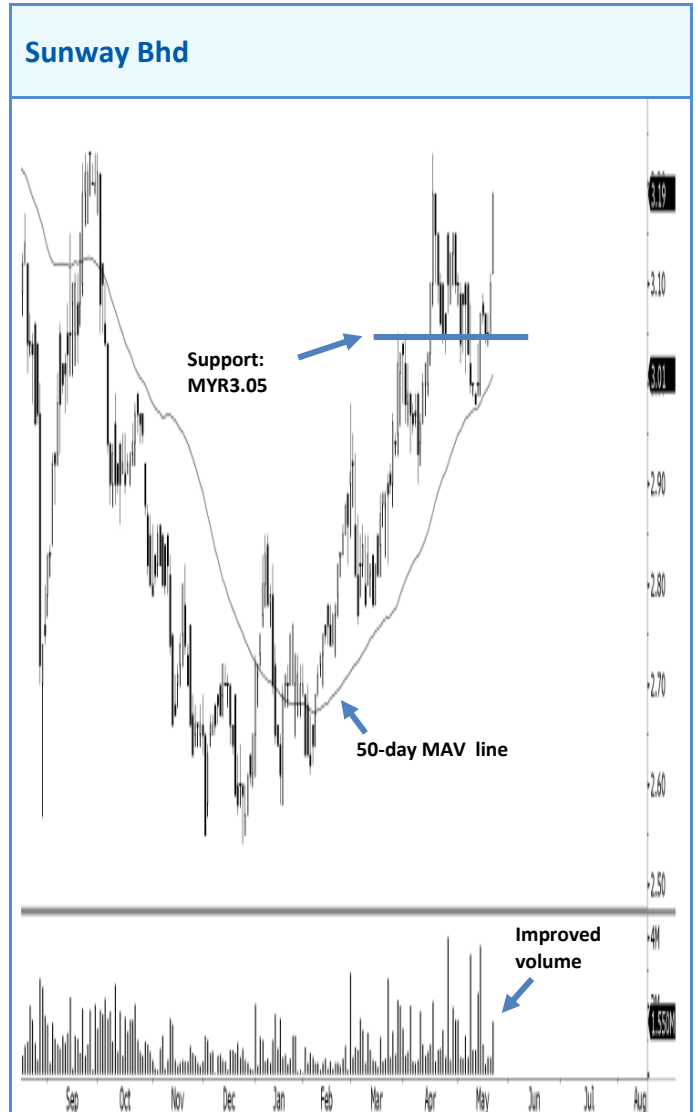
Source: RHB, Bloomberg

QL may rise after getting back above the 100-day MAV line. Traders may opt to purchase the stock if it stays above MYR3.10 today, with a close below MYR3.00 as a stop-loss. If the MYR3.30 resistance is broken, the price target will be MYR3.50. The stock could trend lower if it fails to stay above MYR3.10, while downside risk will increase if the stop-loss is triggered.



Source: RHB, Bloomberg

Johore Tin's downside risk increases after the failed test of the 200-day MAV line. Traders may liquidate if the stock stays below MYR1.70, while supports are anticipated at MYR1.60 and MYR1.50. A failure to stay below MYR1.70 may reverse the weakness, while an upward bias can only be taken seriously upon a close above MYR1.75.



Source: RHB, Bloomberg

Sunway may rise after closing the highest in more than two weeks. Traders could purchase the stock if it stays above MYR3.10 today, with a close below MYR3.05 as a stop-loss. If the MYR3.40 resistance is broken, the price target will be MYR3.50. Note that the stock could trend lower if it fails to stay above MYR3.10, while further support is at MYR2.90.

April's and May's Trading Stocks

Stock	OSK188 Ticker	1st Target	2nd Target	Cut-loss / Buyback	Recommendation
AirAsia	AIRASIA	MYR 2.10	MYR 2.00	MYR 2.35	Sell below MYR2.20 on possible top at MYR2.35
Alam Maritim Res	ALAM	MYR 1.60	MYR 1.65	MYR 1.43	Buy above MYR1.50 on possible bottom at MYR1.43
Ancorp Properties	AMPPOP	MYR 1.00	MYR 1.10	MYR 0.90	Buy on rally continuation above MYR0.95
AMMB Holdings	AMMB	MYR 7.50	MYR 7.90	MYR 7.15	Buy above MYR7.30 on possible bottom at MYR7.15
Axiata Group	AXIATA	MYR 7.00	MYR 7.10	MYR 6.70	Buy above MYR6.75 on possible bottom at MYR6.70
Barakah Offshore	BARAKAH	MYR 1.80	MYR 1.90	MYR 1.65	Buy above MYR1.70 on possible bottom at MYR1.65
BIMB Holdings	BIMB	MYR 3.80	MYR 3.60	MYR 4.15	Sell below MYR4.00 on possible top at MYR4.15
Bonia Corp	BONIA	MYR 5.50	MYR 5.90	MYR 4.80	Buy above MYR5.00 on possible bottom at MYR4.80
Borneo Oil	BORNOIL	MYR 0.58	MYR 0.55	MYR 0.70	Sell below MYR0.64 on possible top at MYR0.70
Brem Holdings	BREM	MYR 2.20	MYR 2.30	MYR 1.95	Buy above MYR2.00 on possible bottom at MYR1.95
Bright Packaging	BRIGHT	MYR 0.73	MYR 0.75	MYR 0.83	Sell below MYR0.80 on possible top at MYR0.825
CB Ind Products	CBIP	MYR 4.80	MYR 5.00	MYR 4.45	Buy above MYR4.50 on possible bottom at MYR4.45
Choo Bee Metal	CHOOBEE	MYR 2.30	MYR 2.50	MYR 2.00	Buy above MYR2.10 on possible bottom at MYR2.00
CIMB Group Holdings	CIMB	MYR 7.60	MYR 7.75	MYR 7.40	Buy above MYR7.50 on possible bottom at MYR7.40
Coastal Contract	COASTAL	MYR 5.20	MYR 5.50	MYR 4.90	Buy on rally continuation above MYR5.00
Country Heights	CHHB	MYR 1.70	MYR 1.80	MYR 1.50	Buy above MYR1.55 on possible bottom at MYR1.50
Cuscapi	CUSCAPI	MYR 0.45	MYR 0.50	MYR 0.39	Buy above MYR0.40 on possible bottom at MYR0.385
Cypark Resources	CYPARK	MYR 3.00	MYR 3.20	MYR 2.80	Buy above MYR2.85 on possible bottom at MYR2.80
Daiman Development	DAIMAN	MYR 3.45	MYR 3.60	MYR 3.00	Buy on rally continuation above MYR3.20
Delloyd Ventures	DELLOYD	MYR 4.00	MYR 4.15	MYR 3.70	Buy above MYR3.80 on possible bottom at MYR3.70
Dialog Group	DIALOG	MYR 3.90	MYR 4.10	MYR 3.60	Buy above MYR3.70 on possible bottom at MYR3.60
DiGi.com	DIGI	MYR 5.45	MYR 5.60	MYR 5.00	Buy on rally continuation above MYR5.20
DKSH Holdings	DKSH	MYR 7.50	MYR 7.25	MYR 9.00	Sell below MYR8.00 on possible top at MYR9.00
EITA Resources	EITA	MYR 1.45	MYR 1.55	MYR 1.30	Buy on rally continuation above MYR1.36
Elsoft Research	ELSOFT	MYR 0.80	MYR 0.85	MYR 0.73	Buy on rally continuation above MYR0.75
Encorp	ENCORP	MYR 1.50	MYR 1.60	MYR 1.37	Buy on rally continuation above MYR1.40
Excel Force	EFORCE	MYR 0.80	MYR 0.85	MYR 0.70	Buy above MYR0.75 on possible bottom at MYR0.70
Faber Group	FABER	MYR 3.20	MYR 3.40	MYR 3.00	Buy above MYR3.10 on possible bottom at MYR3.00
FACB Industries Inc	FACBIND	MYR 1.50	MYR 1.60	MYR 1.30	Buy on rally continuation above MYR1.35
Farlim Group	FARLIM	MYR 0.78	MYR 0.83	MYR 0.67	Buy on rally continuation above MYR0.70
Favelle Favco	FAVCO	MYR 3.75	MYR 4.00	MYR 3.35	Buy above MYR3.50 on possible bottom at MYR3.35
Formosa Prosonic	PFI	MYR 1.00	MYR 1.05	MYR 0.90	Buy on rally continuation above MYR0.95
Genting Plantations	GENP	MYR 11.50	MYR 12.50	MYR 10.80	Buy above MYR11.00 on possible bottom at MYR10.80
GHL Systems	GHLSYS	MYR 0.90	MYR 1.00	MYR 0.80	Buy above MYR0.85 on possible bottom at MYR0.80
Global Oriental	GOB	MYR 1.10	MYR 1.20	MYR 0.95	Buy above MYR1.00 on possible bottom at MYR0.95
Globtronics Techn	GTRONIC	MYR 4.00	MYR 4.10	MYR 3.60	Buy on rally continuation above MYR3.75
Gunung Capital	GUNUNG	MYR 1.00	MYR 1.10	MYR 0.88	Buy above MYR0.90 on possible bottom at MYR0.875
Harbour-Link	HARBOUR	MYR 1.80	MYR 1.70	MYR 2.00	Sell below MYR1.90 on possible top at MYR2.00
Heveaboard	HEVEA	MYR 1.50	MYR 1.60	MYR 1.35	Buy on rally continuation above MYR1.40
Hock Seng Lee	HSL	MYR 2.10	MYR 2.20	MYR 1.90	Buy on rebound continuation above MYR2.00
Homeritz Crop	HOMERIZ	MYR 0.85	MYR 0.90	MYR 0.75	Buy above MYR0.80 on possible bottom at MYR0.75
Hong Leong Fin Gp	HLFG	MYR 17.00	MYR 18.00	MYR 15.50	Buy on rally continuation above MYR16.00
Hua Yang	HUAYANG	MYR 2.00	MYR 2.10	MYR 1.80	Buy above MYR1.90 on possible bottom at MYR1.80
Hup Seng Industries	HUPSENG	MYR 1.25	MYR 1.40	MYR 1.13	Buy on rally continuation above MYR1.20
I-Bhd	IBHD	MYR 3.80	MYR 4.00	MYR 3.50	Buy on rally continuation above MYR3.60
IJM	IJM	MYR 6.75	MYR 7.00	MYR 6.35	Buy on rally continuation above MYR6.50
Inari Amertron	INARI	MYR 2.50	MYR 2.35	MYR 2.80	Sell below MYR2.60 on possible top at MYR2.80
Integrax	INTEGRX	MYR 2.40	MYR 2.50	MYR 2.10	Buy above MYR2.20 on possible bottom at MYR2.10
Ivory Properties	IVORY	MYR 0.70	MYR 0.75	MYR 0.60	Buy above MYR0.65 on possible bottom at MYR0.60
JAKS Resources	JAKS	MYR 0.60	MYR 0.65	MYR 0.55	Buy on rally continuation above MYR0.57
Jaycorp	JAYCORP	MYR 0.85	MYR 0.90	MYR 0.75	Buy above MYR0.77 on possible bottom at MYR0.75
JCY International	JCY	MYR 0.80	MYR 0.85	MYR 0.75	Buy on rally continuation above MYR0.76
Keck Seng	KSENG	MYR 7.30	MYR 7.65	MYR 7.00	Buy above MYR7.10 on possible bottom at MYR7.00
KLCC Properties	KLCC	MYR 7.00	MYR 7.30	MYR 6.40	Buy on rebound continuation above MYR6.60
KNM Group	KNM	MYR 0.75	MYR 0.70	MYR 0.90	Sell below MYR0.80 on possible top at MYR0.90
KPJ Healthcare	KPJ	MYR 3.50	MYR 3.60	MYR 3.20	Buy above MYR3.30 on possible bottom at MYR3.20
Kumpulan Europlus	KEURO	MYR 1.40	MYR 1.50	MYR 1.25	Buy on rally continuation above MYR1.30
Kumpulan Fima	KFIMA	MYR 2.50	MYR 2.70	MYR 2.28	Buy above MYR2.30 on possible bottom at MYR2.28
Kumpulan Perangsang	KPS	MYR 1.60	MYR 1.70	MYR 1.40	Buy above MYR1.50 on possible bottom at MYR1.40
Land & General	L&G	MYR 0.55	MYR 0.60	MYR 0.51	Buy on rally continuation above MYR0.53
Landmarks	LANDMRK	MYR 1.20	MYR 1.30	MYR 1.05	Buy above MYR1.10 on possible bottom at MYR1.05
London Biscuits	LONBISC	MYR 0.93	MYR 1.00	MYR 0.84	Buy above MYR0.85 on possible bottom at MYR0.835
Majuperak Holdings	MJPERAK	MYR 0.55	MYR 0.60	MYR 0.47	Buy above MYR0.50 on possible bottom at MYR0.47
Malayan Flour Mills	MFLOUR	MYR 1.70	MYR 1.80	MYR 1.55	Buy above MYR1.60 on possible bottom at MYR1.55
Malaysia Airport	AIRPORT	MYR 7.50	MYR 7.30	MYR 8.20	Sell below MYR7.90 on possible top at MYR8.20

April's and May's Trading Stocks

Stock	OSK188 Ticker	1st Target	2nd Target	Cut-loss / Buyback	Recommendation
Malaysia Pacific Ind	MPI	MYR 4.85	MYR 5.05	MYR 4.55	Buy on rally continuation above MYR4.70
Masterskill Education	MEGB	MYR 0.50	MYR 0.55	MYR 0.42	Buy above MYR0.45 on possible bottom at MYR0.415
Media Prima	MEDIA	MYR 2.40	MYR 2.30	MYR 2.60	Sell below MYR2.50 on possible top at MYR2.60
Melati Ehsan	MELATI	MYR 1.40	MYR 1.50	MYR 1.25	Buy on rally continuation above MYR1.30
MKH	MKH	MYR 4.70	MYR 4.85	MYR 4.30	Buy above MYR4.40 on possible bottom at MYR4.30
MMC Corp	MMCCORP	MYR 2.60	MYR 2.50	MYR 2.90	Sell below MYR2.75 on possible top at MYR2.90
M-Mode	MMODE	MYR 0.70	MYR 0.75	MYR 0.60	Buy above MYR0.65 on possible bottom at MYR0.60
MPHB Capital	MPHBCAP	MYR 2.10	MYR 2.20	MYR 1.90	Buy on rally continuation above MYR2.00
Muda Holdings	MUDA	MYR 1.85	MYR 2.00	MYR 1.63	Buy above MYR1.70 on possible bottom at MYR1.63
Mudajaya Group	MUDAJYA	MYR 2.95	MYR 3.10	MYR 2.70	Buy above MYR2.80 on possible bottom at MYR2.70
My EG Services	MYEG	MYR 2.50	MYR 2.35	MYR 2.80	Sell below MYR2.70 on possible top at MYR2.80
N2N Connect	N2N	MYR 0.90	MYR 0.98	MYR 0.80	Buy on rally continuation above MYR0.835
Naim Holdings	NAIM	MYR 4.25	MYR 4.40	MYR 3.85	Buy above MYR3.90 on possible bottom at MYR3.85
Narra Industries	NARRA	MYR 1.80	MYR 2.00	MYR 1.65	Buy above MYR1.70 on possible bottom at MYR1.65
NTPM Holdings	NTPM	MYR 0.90	MYR 1.00	MYR 0.84	Buy on rally continuation above MYR0.86
Oka Corp	OKA	MYR 1.80	MYR 2.00	MYR 1.60	Buy above MYR1.65 on possible bottom at MYR1.60
Oldtown	OLDTOWN	MYR 2.20	MYR 2.35	MYR 1.98	Buy above MYR2.05 on possible bottom at MYR1.98
Oriental Holdings	ORIENT	MYR 8.30	MYR 8.50	MYR 7.85	Buy above MYR8.00 on possible bottom at MYR7.85
Padini Holdings	PADINI	MYR 2.10	MYR 2.25	MYR 1.95	Buy above MYR2.00 on possible bottom at MYR1.95
Parkson Holdings	PARKSON	MYR 3.30	MYR 3.50	MYR 3.00	Buy above MYR3.05 on possible bottom at MYR3.00
Pasdec Holdings	PASDEC	MYR 0.63	MYR 0.67	MYR 0.55	Buy above MYR0.58 on possible bottom at MYR0.55
Petra Energy	PENERGY	MYR 2.80	MYR 2.90	MYR 2.50	Buy on rally continuation above MYR2.60
Petronas Chemicals	PCHEM	MYR 6.55	MYR 6.30	MYR 6.90	Sell below MYR6.70 on possible top at MYR6.90
Pintaras Jaya	PTARAS	MYR 4.10	MYR 4.35	MYR 3.80	Buy above MYR3.90 on possible bottom at MYR3.80
Plenitude	PLENITU	MYR 2.80	MYR 3.00	MYR 2.67	Buy on rally continuation above MYR2.70
Poh Huat Resources	POHUAT	MYR 1.40	MYR 1.50	MYR 1.15	Buy above MYR1.25 on possible bottom at MYR1.15
Power Root	PWROOT	MYR 2.10	MYR 2.20	MYR 1.95	Buy above MYR2.00 on possible bottom at MYR1.95
Press Metal	PMETAL	MYR 3.75	MYR 4.00	MYR 3.40	Buy above MYR3.50 on possible bottom at MYR3.40
Prestariang	PRESBHD	MYR 2.05	MYR 2.25	MYR 1.90	Buy above MYR2.00 on possible bottom at MYR1.90
Pretariang	PRESBHD	MYR 4.20	MYR 4.40	MYR 4.00	Buy on rally continuation above MYR4.10
Prtasco	PRTASCO	MYR 2.10	MYR 2.00	MYR 1.90	Buy on rally continuation above MYR2.00
Puncak Niaga	PUNCAK	MYR 3.20	MYR 3.40	MYR 2.90	Buy above MYR3.00 on possible bottom at MYR2.90
SCGM	SCGM	MYR 1.75	MYR 1.90	MYR 1.60	Buy on rally continuation above MYR1.65
Scicom (MSC)	SCICOM	MYR 1.10	MYR 1.15	MYR 0.95	Buy on rally continuation above MYR1.00
Scomi Energy	SCOMIES	MYR 1.25	MYR 1.35	MYR 1.06	Buy on rally continuation above MYR1.10
Seacera Group	SEACERA	MYR 1.30	MYR 1.35	MYR 1.15	Buy on rally continuation above MYR1.20
Sealink International	SEALINK	MYR 0.60	MYR 0.63	MYR 0.53	Buy on rally continuation above MYR0.55
SILK Holdings	SILKHLG	MYR 0.80	MYR 0.85	MYR 0.73	Buy on rally continuation above MYR0.75
Suiwah Corp	SUIWAH	MYR 3.10	MYR 3.30	MYR 2.85	Buy on rally continuation above MYR3.00
Sunsuria	SUNSURIA	MYR 1.75	MYR 1.90	MYR 1.55	Buy above MYR1.60 on possible bottom at MYR1.55
Suria Capital	SURIA	MYR 2.70	MYR 2.90	MYR 2.50	Buy on rally continuation above MYR2.60
Sycal Ventures	SYCAL	MYR 0.48	MYR 0.52	MYR 0.40	Buy on rally continuation above MYR0.425
Tambun Indah	TAMBUN	MYR 2.10	MYR 2.20	MYR 1.90	Buy on rally continuation above MYR2.00
Tan Chong Motors	TCHONG	MYR 5.25	MYR 5.15	MYR 5.70	Sell below MYR5.50 on possible top at MYR5.70
TAS Offshore	TAS	MYR 1.30	MYR 1.45	MYR 1.25	Buy on rally continuation above MYR1.25
Tasco	TASCO	MYR 2.60	MYR 2.90	MYR 2.50	Buy on rally continuation above MYR2.60
Telekom Malaysia	TM	MYR 6.20	MYR 6.40	MYR 6.00	Buy on rally continuation above MYR6.10
Tenaga Nasional	TENAGA	MYR 12.65	MYR 13.00	MYR 11.80	Buy on rally continuation above MYR12.20
TH Plantations	THPLANT	MYR 2.25	MYR 2.40	MYR 2.05	Buy on rally continuation above MYR2.15
TIME dotCom	TIMECOM	MYR 4.65	MYR 5.00	MYR 4.20	Buy above MYR4.40 on possible bottom at MYR4.20
Titijaya Land	TITIJYA	MYR 2.10	MYR 2.00	MYR 1.90	Buy on rally continuation above MYR2.00
Tong Herr Resources	TONGHER	MYR 2.20	MYR 2.25	MYR 1.95	Buy above MYR2.00 on possible bottom at MYR1.95
Tropicana Corp	TROP	MYR 1.65	MYR 1.80	MYR 1.50	Buy above MYR1.60 on possible bottom at MYR1.50
TSH Resources	TSH	MYR 3.50	MYR 3.75	MYR 3.25	Buy on rally continuation above MYR3.40
TSR Capital	TSRCAP	MYR 1.20	MYR 1.30	MYR 1.00	Buy above MYR1.05 on possible bottom at MYR1.00
Tune Insurance	TUNEINS	MYR 2.35	MYR 2.50	MYR 2.15	Buy on rally continuation above MYR2.20
UMW Oil & Gas	UMWOG	MYR 4.25	MYR 4.50	MYR 4.00	Buy above MYR4.10 on possible bottom at MYR4.00
Vitrox Corp	VITROX	MYR 1.60	MYR 1.70	MYR 1.50	Buy on rally continuation above MYR1.56
Wah Seong Corp	WASEONG	MYR 2.20	MYR 2.30	MYR 1.98	Buy on rally continuation above MYR2.00
Wellcall Holdings	WELLCAL	MYR 1.40	MYR 1.30	MYR 1.55	Sell below MYR1.50 on possible top at MYR1.55
Westport Holdings	WSPRT	MYR 2.90	MYR 3.00	MYR 2.65	Buy above MYR2.70 on possible bottom at MYR2.65
Wong Engineering	WONG	MYR 0.85	MYR 0.90	MYR 0.72	Buy above MYR0.75 on possible bottom at MYR0.72
Yang Tai	YONGTAI	MYR 1.40	MYR 1.50	MYR 1.25	Buy on rally continuation above MYR1.30
Yinson Holdings	YINSON	MYR 4.80	MYR 4.60	MYR 5.20	Sell below MYR5.00 on possible top at MYR5.20

RHB Guide to Investment Ratings

Buy: Share price may exceed 10% over the next 12 months

Trading Buy: Share price may exceed 15% over the next 3 months, however longer-term outlook remains uncertain

Neutral: Share price may fall within the range of +/- 10% over the next 12 months

Take Profit: Target price has been attained. Look to accumulate at lower levels

Sell: Share price may fall by more than 10% over the next 12 months

Not Rated: Stock is not within regular research coverage

Disclosure & Disclaimer

All research is based on material compiled from data considered to be reliable at the time of writing, but RHB does not make any representation or warranty, express or implied, as to its accuracy, completeness or correctness. No part of this report is to be construed as an offer or solicitation of an offer to transact any securities or financial instruments whether referred to herein or otherwise. This report is general in nature and has been prepared for information purposes only. It is intended for circulation to the clients of RHB and its related companies. Any recommendation contained in this report does not have regard to the specific investment objectives, financial situation and the particular needs of any specific addressee. This report is for the information of addressees only and is not to be taken in substitution for the exercise of judgment by addressees, who should obtain separate legal or financial advice to independently evaluate the particular investments and strategies.

RHB, its affiliates and related companies, their respective directors, associates, connected parties and/or employees may own or have positions in securities of the company(ies) covered in this research report or any securities related thereto, and may from time to time add to, or dispose off, or may be materially interested in any such securities. Further, RHB, its affiliates and related companies do and seek to do business with the company(ies) covered in this research report and may from time to time act as market maker or have assumed an underwriting commitment in securities of such company(ies), may sell them or buy them from customers on a principal basis and may also perform or seek to perform significant investment banking, advisory or underwriting services for or relating to such company(ies), as well as solicit such investment, advisory or other services from any entity mentioned in this research report.

RHB and its employees and/or agents do not accept any liability, be it directly, indirectly or consequential losses, loss of profits or damages that may arise from any reliance based on this report or further communication given in relation to this report, including where such losses, loss of profits or damages are alleged to have arisen due to the contents of such report or communication being perceived as defamatory in nature.

The term "RHB" shall denote where applicable, the relevant entity distributing the report in the particular jurisdiction mentioned specifically herein below and shall refer to RHB Research Institute SdnBhd, its holding company, affiliates, subsidiaries and related companies.

All Rights Reserved. This report is for the use of intended recipients only and may not be reproduced, distributed or published for any purpose without prior consent of RHB and RHB accepts no liability whatsoever for the actions of third parties in this respect.

Malaysia

This report is published and distributed in Malaysia by RHB Research Institute SdnBhd (233327-M), Level 11, Tower One, RHB Centre, JalanTun Razak, 50400 Kuala Lumpur, a wholly-owned subsidiary of RHB Investment Bank Berhad (RHBIB), which in turn is a wholly-owned subsidiary of RHB Capital Berhad.

Singapore

This report is published and distributed in Singapore by DMG & Partners Research Pte Ltd (Reg. No. 200808705N), a wholly-owned subsidiary of DMG & Partners Securities Pte Ltd, a joint venture between Deutsche Asia Pacific Holdings Pte Ltd (a subsidiary of Deutsche Bank Group) and OSK Investment Bank Berhad, Malaysia which have since merged into RHB Investment Bank Berhad (the merged entity is referred to as "RHBIB", which in turn is a wholly-owned subsidiary of RHB Capital Berhad). DMG & Partners Securities Pte Ltd is a Member of the Singapore Exchange Securities Trading Limited. DMG & Partners Securities Pte Ltd may have received compensation from the company covered in this report for its corporate finance or its dealing activities; this report is therefore classified as a non-independent report.

As of 23 May 2014, DMG & Partners Securities Pte Ltd and its subsidiaries, including DMG & Partners Research Pte Ltd do not have proprietary positions in the securities covered in this report, except for:

a) -

As of 23 May 2014, none of the analysts who covered the securities in this report has an interest in such securities, except for:

a) -

Special Distribution by RHB

Where the research report is produced by an RHB entity (excluding DMG & Partners Research Pte Ltd) and distributed in Singapore, it is only distributed to "Institutional Investors", "Expert Investors" or "Accredited Investors" as defined in the Securities and Futures Act, CAP. 289 of Singapore. If you are not an "Institutional Investor", "Expert Investor" or "Accredited Investor", this research report is not intended for you and you should disregard this research report in its entirety. In respect of any matters arising from, or in connection with this research report, you are to contact our Singapore Office, DMG & Partners Securities Pte Ltd.

Hong Kong

This report is published and distributed in Hong Kong by RHB OSK Securities Hong Kong Limited (“RHBSHK”) (formerly known as OSK Securities Hong Kong Limited), a subsidiary of OSK Investment Bank Berhad, Malaysia which have since merged into RHB Investment Bank Berhad (the merged entity is referred to as “RHBIB”), which in turn is a wholly-owned subsidiary of RHB Capital Berhad.

RHBSHK, RHBIB and/or other affiliates may beneficially own a total of 1% or more of any class of common equity securities of the subject company. RHBSHK, RHBIB and/or other affiliates may, within the past 12 months, have received compensation and/or within the next 3 months seek to obtain compensation for investment banking services from the subject company.

Risk Disclosure Statements

The prices of securities fluctuate, sometimes dramatically. The price of a security may move up or down, and may become valueless. It is as likely that losses will be incurred rather than profit made as a result of buying and selling securities. Past performance is not a guide to future performance. RHBSHK does not maintain a predetermined schedule for publication of research and will not necessarily update this report.

Indonesia

This report is published and distributed in Indonesia by PT RHB OSK Securities Indonesia (formerly known as PT OSK Nusadana Securities Indonesia), a subsidiary of OSK Investment Bank Berhad, Malaysia, which have since merged into RHB Investment Bank Berhad, which in turn is a wholly-owned subsidiary of RHB Capital Berhad.

Thailand

This report is published and distributed in Thailand by RHB OSK Securities (Thailand) PCL (formerly known as OSK Securities (Thailand) PCL), a subsidiary of OSK Investment Bank Berhad, Malaysia, which have since merged into RHB Investment Bank Berhad, which in turn is a wholly-owned subsidiary of RHB Capital Berhad.

Other Jurisdictions

In any other jurisdictions, this report is intended to be distributed to qualified, accredited and professional investors, in compliance with the law and regulations of the jurisdictions.

Kuala Lumpur	Hong Kong	Singapore
<p>Malaysia Research Office RHB Research Institute SdnBhd Level 11, Tower One, RHB Centre JalanTun Razak Kuala Lumpur Malaysia Tel : +(60) 3 9280 2185 Fax : +(60) 3 9284 8693</p>	<p>RHB OSK Securities Hong Kong Ltd. (formerly known as OSK Securities Hong Kong Ltd.) 12th Floor World-Wide House 19 Des Voeux Road Central, Hong Kong Tel : +(852) 2525 1118</p>	<p>DMG & Partners Securities Pte. Ltd. 10 Collyer Quay #09-08 Ocean Financial Centre Singapore 049315 Tel : +(65) 6533 1818 Fax : +(65) 6532 6211</p>
Jakarta	Shanghai	Phnom Penh
<p>PT RHB OSK Securities Indonesia (formerly known as PT OSK Nusadana Securities Indonesia) Plaza CIMB Niaga 14th Floor Jl. Jend. Sudirman Kav.25 Jakarta Selatan 12920, Indonesia Tel : +(6221) 2598 6888 Fax : +(6221) 2598 6777</p>	<p>RHB OSK (China) Investment Advisory Co. Ltd. (formerly known as OSK (China) Investment Advisory Co. Ltd.) Suite 4005, CITIC Square 1168 Nanjing West Road Shanghai 20041 China Tel : +(8621) 6288 9611</p>	<p>RHB OSK Indochina Securities Limited (formerly known as OSK Indochina Securities Limited) No. 1-3, Street 271 SangkatToeukThla, Khan SenSok Phnom Penh Cambodia Tel: +(855) 23 969 161 Fax: +(855) 23 969 171</p>
Bangkok		
<p>RHB OSK Securities (Thailand) PCL (formerly known as OSK Securities (Thailand) PCL) 10th Floor, Sathorn Square Office Tower 98, North Sathorn Road, Silom Bangrak, Bangkok 10500 Thailand Tel: +(66) 862 9999</p>		