

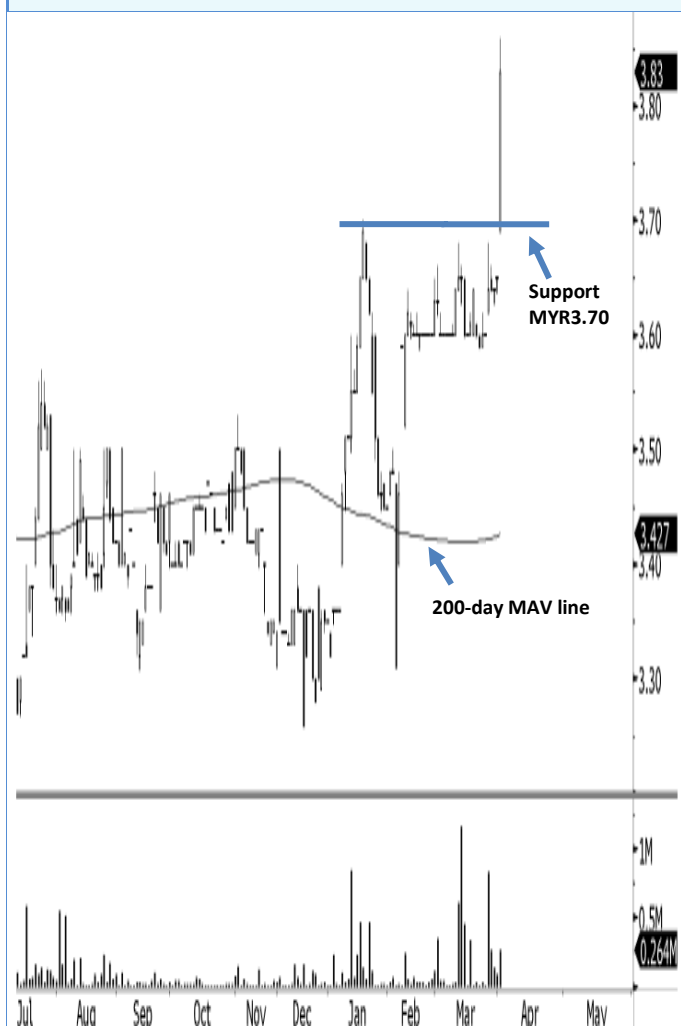
Mohammad Ashraf Abu Bakar, CMT

Tel : +6(03)9207 7699

Email : ashraf.abubakar@rhbgroup.com

Trading Stocks

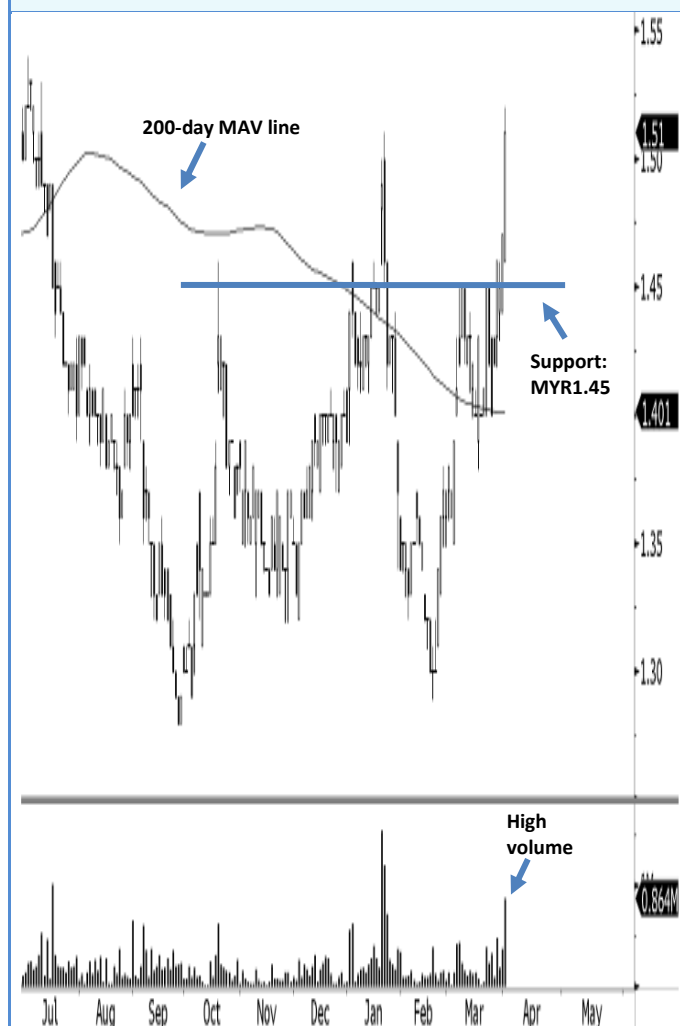
Selangor Properties Bhd



Source: RHBRI, Bloomberg

Selangor Properties may rise further after printing a new 52-week high. A position can be initiated if the stock stays above MYR3.70, with a close below the same level as stop-loss. The price target is MYR4.20, if the psychological MYR4.00 is violated. Failure to stay above MYR3.70 will likely see the stock trade sideways, with strong support at MYR3.50.

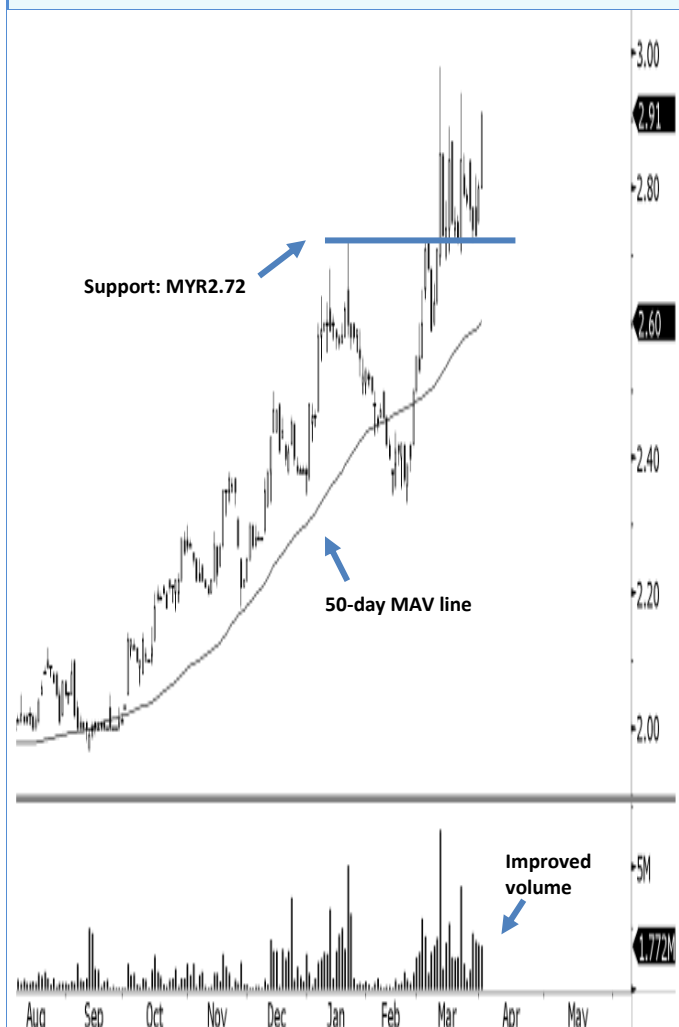
Kimlun Corp Bhd



Source: RHBRI, Bloomberg

Kimlun may continue to climb after closing at its highest in more than 8 months. A purchase can be made if the stock stays above MYR1.50, with a close below MYR1.45 as stop-loss. The price target is MYR1.70, with resistance also expected at MYR1.60. Failure to stay above MYR1.50 should see the stock trend sideways. Strong support can be found at MYR1.40.

Dayang Enterprise Holdings Bhd



Source: RHBRI, Bloomberg

Dayang may climb after printing a new all-time high last Friday. A position can be initiated if the stock stays above MYR2.85, with a close below MYR2.72 as stop-loss. The price target is MYR3.25, if the psychological MYR3.00 is violated. The stock is likely to trade lower if the stop-loss is triggered, with supports seen at MYR2.60 and a stronger one at MYR2.50.

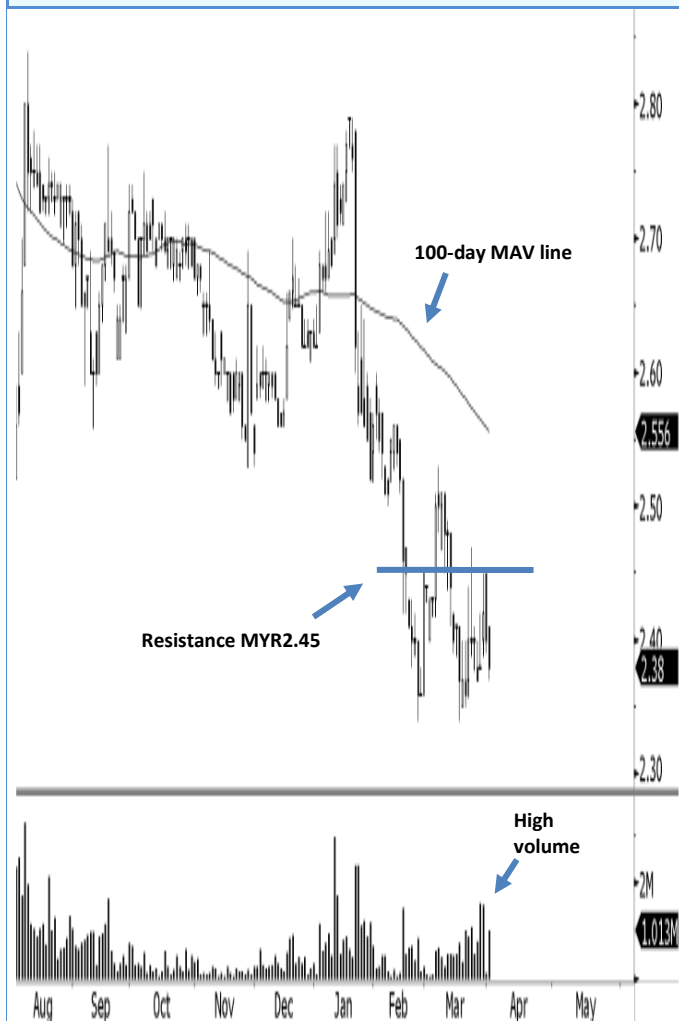
Eversendai Corp Bhd



Source: RHBRI, Bloomberg

Eversendai may rebound after forming 2 consecutive white candles. A position can be initiated if the stock stays above MYR1.20, with a close below MYR1.18 as stop-loss. The price target is MYR1.50, with resistance also expected at MYR1.33. Failure to stay above MYR1.20 will likely see the stock move sideways, and selling may intensify on a close below MYR1.09.

Mudajaya Group Bhd



Source: RHBRI, Bloomberg

Mudajaya could decline after high volume trades failed to lift above RM2.40. A position can be liquidated if the stock closes below MYR2.36, with supports anticipated at MYR2.15 and the psychological MYR2.00. Buying may, however, resume if the stock closes above MYR2.45. Expect resistance at MYR2.50 and MYR2.60.

Boustead Holdings Bhd



Source: RHBRI, Bloomberg

Boustead may rally further if it can nullify the black candle of 29 Mar. A position can be initiated if the stock closes above MYR5.20, with a close below MYR5.10 as stop-loss. The price targets are the prior highs of MYR5.50 and MYR5.70, while failure to get above MYR5.20 should see the stock continue moving sideways, with strong support at MYR5.00.

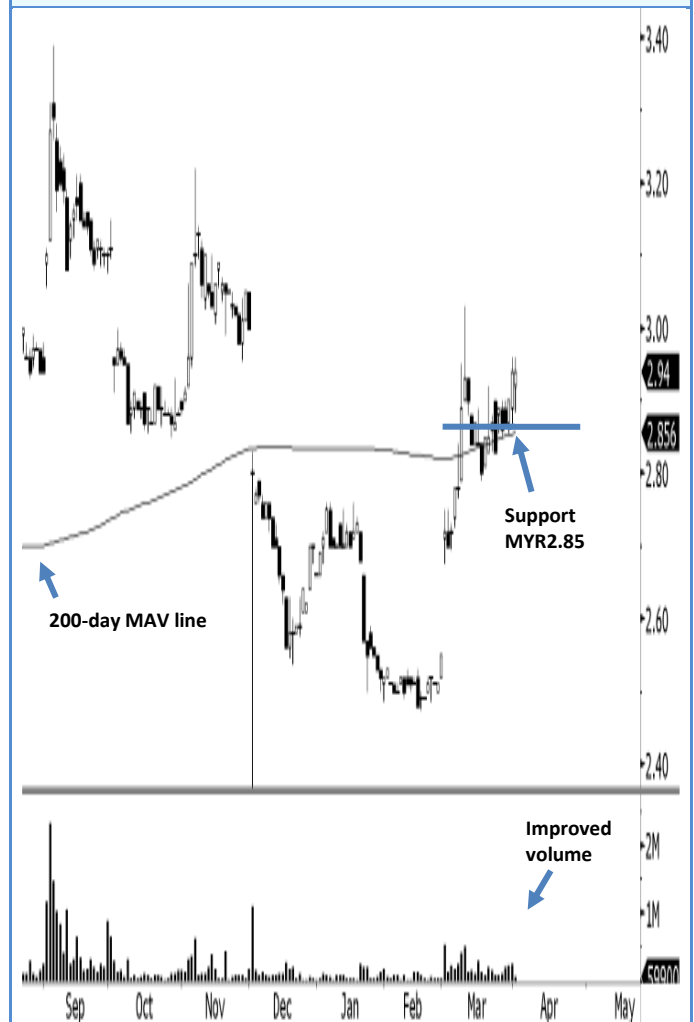
Rimbunan Sawit Bhd



Source: RHBRI, Bloomberg

Rimbunan Sawit may decline after failing to break above the MYR0.80 resistance level. A position can be liquidated if the stock stays below MYR0.775, with supports anticipated at MYR0.725 and MYR0.67. A close above MYR0.80, however, will lead to a higher price. Resistance can be found at MYR0.85 and MYR0.90.

MNRB Holdings Bhd



Source: RHBRI, Bloomberg

MNRB may continue to ascend after staying above the 200-day MAV line. A position can be initiated if the stock stays above MYR2.90, with a close below MYR2.85 as stop-loss. The price target is MYR3.40, if the psychological MYR3.00 is broken. Failure to stay above MYR2.90 could see the stock trend lower, with supports seen at MYR2.75 and MYR2.65.

February and March's Trading Stocks

Stock	OSK188 Ticker	1st Target	2nd Target	Cut-loss / Buyback	Recommendation
AEON Co	AEON	MYR 14.00	MYR 15.00	MYR 12.80	Buy on rebound continuation above MYR13.00
AEON Credit Services	AEONCR	MYR 13.00	MYR 13.70	MYR 11.20	Buy on rebound continuation above MYR12.00
Ahmad Zaki Res	AZRB	MYR 0.80	MYR 0.87	MYR 0.70	Buy above MYR0.73 on possible bottom at MYR0.70
Ajinomoto	AJI	MYR 4.50	MYR 4.65	MYR 4.10	Buy on break of 6-month resistance of MYR4.24
AlamMaritim	ALAM	MYR 1.00	MYR 1.15	MYR 0.87	Buy on rally continuation above MYR0.90
Alliance Fin Group	AFG	MYR 4.60	MYR 4.80	MYR 4.30	Buy on rally continuation above MYR4.40
Allianz Malaysia	ALLIANZ	MYR 9.00	MYR 9.40	MYR 7.70	Buy on rally continuation above MYR8.00
Amcorp Properties	AMPROP	MYR 0.70	MYR 0.75	MYR 0.64	Buy above MYR0.65 on possible bottom at MYR0.635
Apollo Food Hldg	APOLLO	MYR 3.70	MYR 4.00	MYR 3.34	Buy on rally continuation above MYR3.50
Axiata Group	AXIATA	MYR 6.60	MYR 6.90	MYR 6.30	Buy on break of 2-month resistance of MYR6.45
Berjaya Food	BJFOOD	MYR 1.50	MYR 1.60	MYR 1.20	Buy above MYR1.25 on possible bottom at MYR1.20
BIMB Holdings	BIMB	MYR 3.50	MYR 3.70	MYR 3.15	Buy on rally continuation above MYR3.30
BLD Plantations	BLDPLNT	MYR 9.00	MYR 9.40	MYR 8.20	Buy on rebound continuation above MYR8.50
BoilemechHldg	BOILERM	MYR 1.10	MYR 1.17	MYR 0.96	Buy on rally continuation above MYR1.00
Bolton	BOLTON	MYR 1.00	MYR 1.10	MYR 86.00	Buy above MYR0.88 on possible bottom at MYR0.86
Boustead Holdings	BSTEAD	MYR 4.70	MYR 4.50	MYR 5.00	Sell below MYR4.85 on possible top at MYR5.00
Bumi Armada	ARMADA	MYR 3.60	MYR 3.50	MYR 3.84	Sell below MYR3.76 on possible top at MYR3.84
Bursa Malaysia	BURSA	MYR 7.00	MYR 7.50	MYR 6.55	Buy on rebound continuation above MYR6.65
Carlsberg Brewery	CARLSBG	MYR 14.00	MYR 14.70	MYR 12.80	Buy on rally continuation above MYR13.20
Censoft Holdings	CENSOF	MYR 0.50	MYR 0.55	MYR 0.42	Buy above MYR0.43 on possible bottom at MYR0.415
Chemical Company	CCM	MYR 1.10	MYR 1.04	MYR 1.28	Sell below MYR1.20 on possible top at MYR1.28
CI Holdings	CIHLDG	MYR 1.22	MYR 1.32	MYR 1.05	Buy on rebound continuation above MYR1.10
CIMB Group Holdings	CIMB	MYR 7.55	MYR 7.70	MYR 7.20	Buy on break of 2-month resistance of MYR7.30
CocoaLand Holdings	COCOLND	MYR 2.27	MYR 2.35	MYR 2.00	Buy above MYR2.10 on possible bottom at MYR2.00
Crescendo Corp	CRESNDO	MYR 2.20	MYR 2.40	MYR 1.96	Buy on rally continuation above MYR2.00
Crest Builder Hldg	CRESBLD	MYR 0.90	MYR 0.95	MYR 0.78	Buy above MYR0.80 on possible bottom at MYR0.775
Cypark Resources	CYPARK	MYR 1.48	MYR 1.33	MYR 1.65	Sell below MYR1.60 on possible top at MYR1.65
Daibochi Plastic	DAIBOCI	MYR 2.70	MYR 2.85	MYR 2.45	Buy above MYR2.55 on possible bottom at MYR2.45
Daiman Development	DAIMAN	MYR 2.20	MYR 2.30	MYR 1.87	Buy on rally continuation above MYR2.00
Daya Materials	DAYA	MYR 0.23	MYR 0.25	MYR 0.20	Buy above MYR0.205 on possible bottom at MYR0.195
Dayang Enterprise	DAYANG	MYR 2.55	MYR 2.70	MYR 2.35	Buy above MYR2.40 on possible bottom at MYR2.35
Deleum	DELEUM	MYR 2.20	MYR 2.40	MYR 1.90	Buy on rally continuation above MYR2.00
DiGi.com	DIGI	MYR 4.35	MYR 4.20	MYR 4.60	Sell on break of 6-month low of MYR4.50
Eastern & Oriental	E&O	MYR 1.50	MYR 1.40	MYR 1.65	Sell below MYR1.62 on possible top at MYR1.65
Ekovest	EKOVEST	MYR 3.25	MYR 3.50	MYR 2.70	Buy on break of 12-month resistance of MYR2.75
Faber Group	FABER	MYR 1.65	MYR 1.80	MYR 1.47	Buy on close above 6-month resistance of MYR1.55
FACB Industries Inc	FACBIND	MYR 1.40	MYR 1.50	MYR 1.18	Buy on rally continuation above MYR1.20
FavelleFavco	FAVCO	MYR 2.00	MYR 2.20	MYR 1.74	Buy on rally continuation above MYR1.80
Fraser & Neave	F&N	MYR 18.90	MYR 19.80	MYR 17.90	Buy on break of 3-month resistance of MYR18.30
Gabungan AQRs	GBGAQRS	MYR 0.95	MYR 0.88	MYR 1.00	Sell on close below psychological MYR1.00
Gadang Holdings	GADANG	MYR 0.66	MYR 0.70	MYR 0.60	Buy above MYR0.63 on possible bottom at MYR0.60
Gamuda	GAMUDA	MYR 4.10	MYR 4.25	MYR 3.88	Buy above MYR3.90 on possible bottom at MYR3.88
Genting	GENTING	MYR 9.30	MYR 9.00	MYR 9.65	Sell on sustained close below MYR9.50
Genting Malaysia	GENM	MYR 3.80	MYR 3.90	MYR 3.50	Buy above MYR3.50 on possible bottom at MYR3.35
Glomac	GLOMAC	MYR 0.92	MYR 0.88	MYR 1.00	Sell below MYR1.00 on possible top at MYR1.00
Guocoland (M)	GUOCO	MYR 0.95	MYR 1.00	MYR 0.83	Buy on break of 12-month resistance of MYR0.86
Hua Yang	HUAYANG	MYR 1.85	MYR 2.00	MYR 1.65	Buy on rally continuation above MYR1.75
I-Bhd	IBHD	MYR 1.60	MYR 1.70	MYR 1.40	Buy on rally continuation above MYR1.40
icapital.biz	ICAP	MYR 2.50	MYR 2.60	MYR 2.28	Buy above MYR2.32 on possible bottom at MYR2.28
IGB Corp	IGB	MYR 2.20	MYR 2.00	MYR 2.45	Sell below MYR2.30 on possible top at MYR2.35
IHH Healthcare	IHH	MYR 3.36	MYR 3.25	MYR 3.55	Sell below MYR3.49 on possible top at MYR3.55
IJM Corp	IJM	MYR 5.50	MYR 5.65	MYR 5.10	Buy on break of 6-month resistance of MYR5.25
IJM Land	IJMLAND	MYR 2.55	MYR 2.70	MYR 2.30	Buy on close above 6-month resistance of MYR2.40
IJM Plantations	IJMLNT	MYR 3.30	MYR 3.40	MYR 3.20	Buy on break of 6-month resistance of MYR3.20
IOI Corp	IOICORP	MYR 4.50	MYR 4.35	MYR 5.00	Sell below MYR5.00 on possible top at MYR5.05
Ivory Properties Gp	IVORY	MYR 0.60	MYR 0.64	MYR 0.50	Buy on close above 4-month resistance of MYR0.525
JobStreet Corp	JOBST	MYR 2.80	MYR 3.00	MYR 2.40	Buy on rebound continuation above MYR2.5
KNM Group	KNM	MYR 0.45	MYR 0.42	MYR 0.52	Sell below MYR0.50 on possible top at MYR0.52
KPJ Healthcare	KPJ	MYR 5.70	MYR 5.50	MYR 6.00	Sell below MYR6.00 on possible top at MYR6.00
KSL Holdings	KSL	MYR 2.00	MYR 2.10	MYR 1.65	Buy on rally continuation above MYR1.70
KUB Malaysia	KUB	MYR 0.50	MYR 0.56	MYR 0.43	Buy on break of 3-month resistance of MYR0.46
Kumpulan Fima	KFIMA	MYR 1.60	MYR 1.45	MYR 1.87	Sell below MYR1.80 on possible top at MYR1.87
Kumpulan Jetson	JETSON	MYR 1.42	MYR 1.50	MYR 1.28	Buy above MYR1.28 on possible bottom at MYR1.32

February and March's Trading Stocks

Stock	OSK188 Ticker	1st Target	2nd Target	Cut-loss / Buyback	Recommendation
Lafarge Malayan	LMCMNT	MYR 11.30	MYR 12.50	MYR 9.60	Buy on rally continuation above MYR10.00
Lien Hoe Corp	LIENHOE	MYR 0.37	MYR 0.40	MYR 0.31	Buy on break of 12-month resistance of MYR0.325
Lion Industries Corp	LIONIND	MYR 0.85	MYR 0.79	MYR 0.94	Sell below MYR0.90 on possible top at MYR0.94
MAA Group	MAA	MYR 0.55	MYR 0.60	MYR 0.48	Buy above MYR0.50 on possible bottom at MYR0.48
Mah Sing Group	MAHSING	MYR 2.50	MYR 2.70	MYR 2.17	Buy on rebound continuation above MYR2.320
Malaysia AirpotHldg	AIRPORT	MYR 6.00	MYR 6.30	MYR 5.60	Buy on rebound continuation above MYR5.70
Malaysia Building Soc	MBSB	MYR 2.80	MYR 3.00	MYR 2.65	Buy above MYR2.70 on possible bottom at MYR2.65
Malaysia Pacific	MPCORP	MYR 0.40	MYR 0.43	MYR 0.30	Buy on break of 9-month resistance of MYR0.32
Malaysia Resources	MRCB	MYR 1.50	MYR 1.60	MYR 1.31	Buy above MYR1.37 on possible bottom at MYR1.31
Malaysian Bulk	MAYBULK	MYR 1.64	MYR 1.80	MYR 1.49	Buy above MYR1.52 on possible bottom at MYR1.49
Media Prima	MEDIA	MYR 2.10	MYR 2.00	MYR 2.40	Sell below MYR2.30 on possible top at MYR2.40
MK Land Holdings	MKLAND	MYR 0.29	MYR 0.26	MYR 0.34	Sell below MYR0.32 on possible top at MYR0.335
MMC Corp	MMCCORP	MYR 2.40	MYR 2.30	MYR 2.55	Sell below MYR2.50 on possible top at MYR2.55
MNRB Holdings	MNRB	MYR 3.15	MYR 3.30	MYR 2.75	Buy above MYR2.80 on possible bottom at MYR2.75
Muhibbah Engineering	MUHIHBAH	MYR 1.10	MYR 1.15	MYR 0.87	Buy on break of 6-month resistance of MYR0.95
Mulpha International	MULPHA	MYR 0.45	MYR 0.48	MYR 0.38	Buy on break of 3-month resistance of MYR0.40
Multi PurposeHldg	MPHB	MYR 3.35	MYR 3.20	MYR 3.65	Sell below MYR3.57 on possible top at MYR3.65
MWE Holdings	MWE	MYR 1.90	MYR 2.00	MYR 1.65	Buy on rally continuation above MYR1.80
Naim Holdings	NAIM	MYR 2.20	MYR 2.35	MYR 1.90	Buy on close above 6-month resistance of MYR2.00
NTPM Holdings	NTPM	MYR 0.52	MYR 0.55	MYR 0.47	Buy on rebound continuation above MYR0.475
OldTown	OLDTOWN	MYR 2.70	MYR 2.80	MYR 2.40	Buy on rally continuation above MYR2.50
Pacific & Orient	P&O	MYR 1.50	MYR 1.65	MYR 1.35	Buy on rally continuation above MYR1.40
Pantech Group	PANTECH	MYR 0.80	MYR 0.88	MYR 0.70	Buy above MYR0.72 on possible bottom at MYR0.695
Perak Corp	PRKCORP	MYR 1.60	MYR 1.75	MYR 1.35	Buy on close above 9-month resistance of MYR1.40
Perdana Petroleum	PERDANA	MYR 1.45	MYR 1.55	MYR 1.23	Buy on rally continuation above MYR1.30
Perisai Petroleum	PERISAI	MYR 1.22	MYR 1.32	MYR 1.05	Buy above MYR1.10 on possible bottom at MYR1.05
Pestech International	PESTECH	MYR 1.23	MYR 1.30	MYR 1.07	Buy on rally continuation above MYR1.10
Petronas Chemicals	PCHEM	MYR 6.75	MYR 7.00	MYR 6.25	Buy on break of 3-month resistance of MYR7.40
Plenitude	PLENITU	MYR 2.00	MYR 2.15	MYR 1.86	Buy on break of 3-month resistance of MYR1.90
PohHuat Resources	POHUAT	MYR 0.53	MYR 0.59	MYR 0.46	Buy on rally continuation above MYR0.46
PPB Group	PPB	MYR 13.20	MYR 14.00	MYR 12.00	Buy above MYR12.30 on possible bottom at MYR12.00
Protasco	PRTASCO	MYR 1.10	MYR 1.20	MYR 0.99	Buy above MYR1.02 on possible bottom at MYR0.99
PuncakNiagaHldg	PUNCAK	MYR 1.50	MYR 1.60	MYR 1.34	Buy on rebound continuation above MYR1.40
QL Resources	QL	MYR 2.85	MYR 2.80	MYR 3.02	Sell on break of 12-month low of MYR3.00
Salcon	SALCON	MYR 0.43	MYR 0.40	MYR 0.47	Sell below MYR0.465 on possible top at MYR0.465
SapuraKencana Pet	SKPETRO	MYR 3.15	MYR 3.30	MYR 2.94	Buy on rebound continuation above MYR3.00
Scomi Group	SCOMI	MYR 0.40	MYR 0.45	MYR 0.34	Buy above MYR0.36 on possible bottom at MYR0.34
Scomi Marine	SCOMIMR	MYR 0.45	MYR 0.50	MYR 0.38	Buy on rebound continuation above MYR0.405
SEG International	SEG	MYR 1.55	MYR 1.40	MYR 1.75	Sell on break of 12-month low of MYR1.70
Sime Darby	SIME	MYR 9.00	MYR 8.70	MYR 9.30	Sell below MYR9.17 on possible top at MYR9.30
Sino Hua-an Intl	HUAAN	MYR 0.22	MYR 0.25	MYR 0.18	Buy on break of 5-month resistance of MYR0.185
SKP Resources	SKPRES	MYR 0.28	MYR 0.25	MYR 0.33	Buy on break of 6-month resistance of MYR0.33
Souther Acids	SAB	MYR 2.70	MYR 2.90	MYR 2.45	Buy on rally continuation above MYR2.55
Sunway	SUNWAY	MYR 3.00	MYR 3.30	MYR 2.72	Buy on rally continuation above MYR2.80
Sunway REIT	SUNREIT	MYR 1.41	MYR 1.36	MYR 1.53	Sell below MYR1.50 on possible top at MYR1.53
Syarikat Takaful	TAKAFUL	MYR 6.00	MYR 6.60	MYR 5.30	Buy above MYR5.50. on possible bottom at MYR5.30
Tambun Indah	TAMBUN	MYR 1.00	MYR 1.05	MYR 0.88	Buy on rally continuation above MYR0.875
TDM	TDM	MYR 3.65	MYR 3.90	MYR 3.40	Buy on rebound continuation above MYR4.50
TebrauTeguh	TEBRAU	MYR 1.28	MYR 1.20	MYR 1.50	Sell below MYR1.50 on possible top at MYR1.50
Telekom Malaysia	TM	MYR 5.15	MYR 4.90	MYR 5.35	Sell below MYR5.30 on possible top at MYR5.35
TenagaNasional	TENAGA	MYR 7.40	MYR 8.00	MYR 6.90	Buy above MYR7.00 on possible bottom at MYR6.90
TH Heavy Engineering	THHEAVY	MYR 0.40	MYR 0.36	MYR 0.46	Sell below MYR0.445 on possible top at MYR0.46
TH Plantations	THPLANT	MYR 2.00	MYR 1.90	MYR 2.10	Sell below MYR2.10 on possible top at MYR2.10
TIME Engineering	TIME	MYR 0.26	MYR 0.23	MYR 0.31	Sell below MYR0.30 on possible top at MYR0.31
Top Glove Corp	TOPGLOV	MYR 4.90	MYR 4.75	MYR 5.25	Sell on break of 3-month low of MYR5.20
UEM Land Holdings	UEMLAND	MYR 2.90	MYR 3.00	MYR 2.48	Buy above MYR2.60 on possible bottom at MYR2.48
UMW Holdings	UMW	MYR 13.00	MYR 13.90	MYR 11.90	Buy above MYR12.20 on possible bottom at MYR11.90
United Malacca	UMCCA	MYR 7.55	MYR 8.00	MYR 7.10	Buy above MYR7.20 on possible bottom at MYR7.10
UOA Development	UOADEV	MYR 2.00	MYR 2.25	MYR 1.83	Buy on rebound continuation above MYR1.90
Uzma	UZMA	MYR 2.00	MYR 2.20	MYR 1.70	Buy on rally continuation above MYR1.80
WCT	WCT	MYR 2.25	MYR 2.15	MYR 2.40	Sell below MYR2.33 on possible top at MYR2.40
Willloglen MSC	WILLOW	MYR 0.40	MYR 0.42	MYR 0.35	Buy on rally continuation above MYR0.36
Xingquan Intl	XINQUAN	MYR 0.90	MYR 1.00	MYR 0.77	Buy on break of 5-month resistance of MYR0.80
Yinson Holdings	YINSON	MYR 2.50	MYR 2.70	MYR 2.23	Buy on rally continuation above MYR2.35
YTL Power Intl	YTLPOWR	MYR 1.45	MYR 1.35	MYR 1.52	Sell on downtrend continuation below MYR1.50

RHB Guide to Investment Ratings

Buy: Share price may exceed 10% over the next 12 months

Trading Buy: Share price may exceed 15% over the next 3 months, however longer-term outlook remains uncertain

Neutral: Share price may fall within the range of +/- 10% over the next 12 months

Take Profit: Target price has been attained. Look to accumulate at lower levels

Sell: Share price may fall by more than 10% over the next 12 months

Not Rated: Stock is not within regular research coverage

Disclosure & Disclaimer

All research is based on material compiled from data considered to be reliable at the time of writing, but RHB does not make any representation or warranty, express or implied, as to its accuracy, completeness or correctness. No part of this report is to be construed as an offer or solicitation of an offer to transact any securities or financial instruments whether referred to herein or otherwise. This report is general in nature and has been prepared for information purposes only. It is intended for circulation to the clients of RHB and its related companies. Any recommendation contained in this report does not have regard to the specific investment objectives, financial situation and the particular needs of any specific addressee. This report is for the information of addressees only and is not to be taken in substitution for the exercise of judgment by addressees, who should obtain separate legal or financial advice to independently evaluate the particular investments and strategies.

RHB, its affiliates and related companies, their respective directors, associates, connected parties and/or employees may own or have positions in securities of the company(ies) covered in this research report or any securities related thereto, and may from time to time add to, or dispose off, or may be materially interested in any such securities. Further, RHB, its affiliates and related companies do and seek to do business with the company(ies) covered in this research report and may from time to time act as market maker or have assumed an underwriting commitment in securities of such company(ies), may sell them or buy them from customers on a principal basis and may also perform or seek to perform significant investment banking, advisory or underwriting services for or relating to such company(ies), as well as solicit such investment, advisory or other services from any entity mentioned in this research report.

RHB and its employees and/or agents do not accept any liability, be it directly, indirectly or consequential losses, loss of profits or damages that may arise from any reliance based on this report or further communication given in relation to this report.

The term “RHB” shall denote where applicable, the relevant entity distributing the report in the particular jurisdiction mentioned specifically herein below and shall refer to RHB Research Institute SdnBhd, its holding company, affiliates, subsidiaries and related companies.

All Rights Reserved. This report is for the use of intended recipients only and may not be reproduced, distributed or published for any purpose without prior consent of RHB and RHB accepts no liability whatsoever for the actions of third parties in this respect.

Malaysia

This report is published and distributed in Malaysia by RHB Research Institute SdnBhd (233327-M), Level 11, Tower One, RHB Centre, Jalan Tun Razak, 50400 Kuala Lumpur, a wholly-owned subsidiary of RHB Investment Bank Berhad (RHBIB), which in turn is a wholly-owned subsidiary of RHB Capital Berhad.

As of 02 April 2013, RHBIB does not have proprietary positions in the subject companies, except for:

a) -

As of 02 April 2013, none of the analysts who covered the stock in this report has an interest in the subject companies covered in this report, except for:

a) -

Singapore

This report is published and distributed in Singapore by DMG & Partners Research Pte Ltd (Reg. No. 200808705N), a wholly-owned subsidiary of DMG & Partners Securities Pte Ltd, a joint venture between OSK Investment Bank Berhad, Malaysia (“OSKIB”) and Deutsche Asia Pacific Holdings Pte Ltd (a subsidiary of Deutsche Bank Group). DMG & Partners Securities Pte Ltd is a Member of the Singapore Exchange Securities Trading Limited and is a subsidiary of OSKIB, which in turn is a wholly-owned subsidiary of RHB Capital Berhad. DMG & Partners Securities Pte Ltd may have received compensation from the company covered in this report for its corporate finance or its dealing activities; this report is therefore classified as a non-independent report.

As of 02 April 2013, DMG & Partners Securities Pte Ltd and its subsidiaries, including DMG & Partners Research Pte Ltd do not have proprietary positions in the subject companies, except for:

a) -

As of 02 April 2013, none of the analysts who covered the stock in this report has an interest in the subject companies covered in this report, except for:

a) -

Special Distribution by RHB

Where the research report is produced by an RHB entity (excluding DMG & Partners Research Pte Ltd) and distributed in Singapore, it is only distributed to "Institutional Investors", "Expert Investors" or "Accredited Investors" as defined in the Securities and Futures Act, CAP. 289 of Singapore. If you are not an "Institutional Investor", "Expert Investor" or "Accredited Investor", this research report is not intended for you and you should disregard this research report in its entirety. In respect of any matters arising from, or in connection with this research report, you are to contact our Singapore Office, DMG & Partners Securities Pte Ltd.

Hong Kong

This report is published and distributed in Hong Kong by OSK Securities Hong Kong Limited ("OSKSHK"), a subsidiary of OSK Investment Bank Berhad, Malaysia ("OSKIB"), which in turn is a wholly-owned subsidiary of RHB Capital Berhad.

OSKSHK, OSKIB and/or other affiliates may beneficially own a total of 1% or more of any class of common equity securities of the subject company. OSKSHK, OSKIB and/or other affiliates may, within the past 12 months, have received compensation and/or within the next 3 months seek to obtain compensation for investment banking services from the subject company.

Risk Disclosure Statements

The prices of securities fluctuate, sometimes dramatically. The price of a security may move up or down, and may become valueless. It is as likely that losses will be incurred rather than profit made as a result of buying and selling securities. Past performance is not a guide to future performance. OSKSHK does not maintain a predetermined schedule for publication of research and will not necessarily update this report

Indonesia

This report is published and distributed in Indonesia by PT OSK Nusadana Securities Indonesia, a subsidiary of OSK Investment Bank Berhad, Malaysia, which in turn is a wholly-owned subsidiary of RHB Capital Berhad.

Thailand

This report is published and distributed in Thailand by OSK Securities (Thailand) PCL, a subsidiary of OSK Investment Bank Berhad, Malaysia, which in turn is a wholly-owned subsidiary of RHB Capital Berhad.

Other Jurisdictions

In any other jurisdictions, this report is intended to be distributed to qualified, accredited and professional investors, in compliance with the law and regulations of the jurisdictions.

Kuala Lumpur	Hong Kong	Singapore
Malaysia Research Office RHB Research Institute SdnBhd Level 11, Tower One, RHB Centre Jalan Tun Razak Kuala Lumpur Malaysia Tel : +(60) 3 9280 2185 Fax : +(60) 3 9284 8693	OSK Securities Hong Kong Ltd. 12 th Floor World-Wide House 19 Des Voeux Road Central, Hong Kong Tel : +(852) 2525 1118 Fax : +(852) 2810 0908	DMG & Partners Securities Pte. Ltd. 10 Collyer Quay #09-08 Ocean Financial Centre Singapore 049315 Tel : +(65) 6533 1818 Fax : +(65) 6532 6211
Jakarta	Shanghai	Phnom Penh
PT OSK Nusadana Securities Indonesia Plaza CIMB Niaga 14th Floor Jl. Jend. Sudirman Kav.25 Jakarta Selatan 12920, Indonesia Tel : +(6221) 2598 6888 Fax : +(6221) 2598 6777	OSK (China) Investment Advisory Co. Ltd. Suite 4005, CITIC Square 1168 Nanjing West Road Shanghai 20041 China Tel : +(8621) 6288 9611 Fax : +(8621) 6288 9633	OSK Indochina Securities Limited No. 1-3, Street 271 Sangkat Toeuk Thla, Khan Sen Sok Phnom Penh Cambodia Tel: +(855) 23 969 161 Fax: +(855) 23 969 171
Bangkok		
OSK Securities (Thailand) PCL 10th Floor, Sathorn Square Office Tower 98, North Sathorn Road, Silom Bangrak, Bangkok 10500 Thailand Tel: +(662) 862 9999 Fax : +(662) 108 0999		